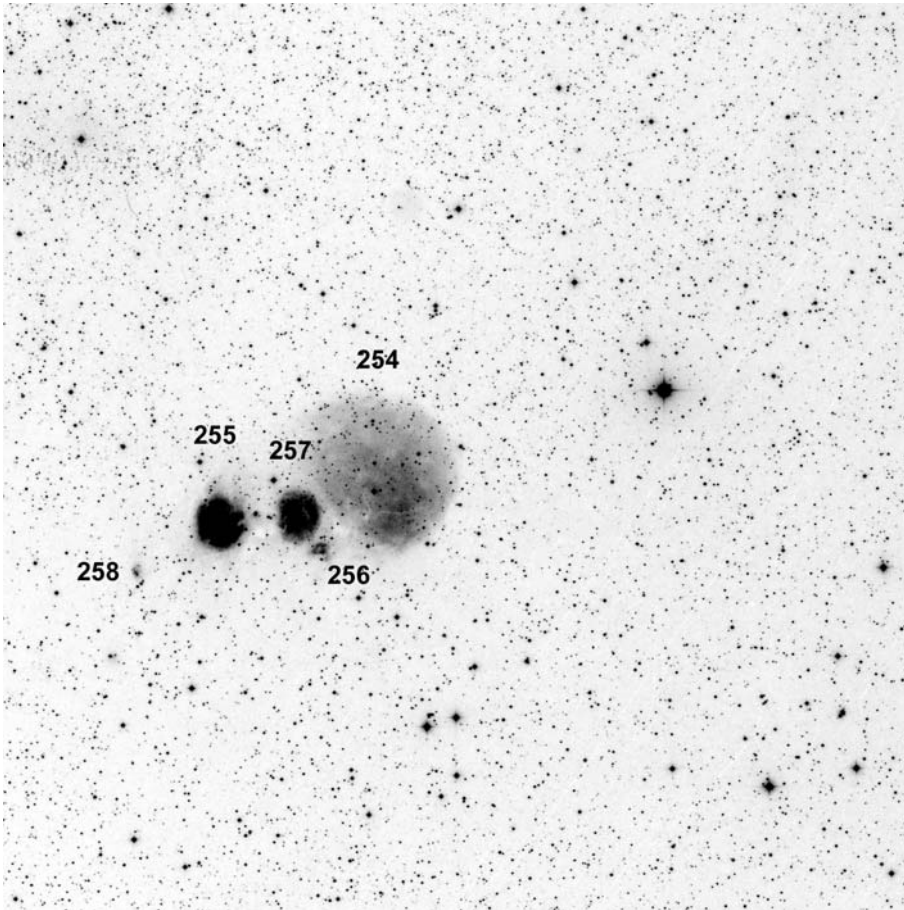
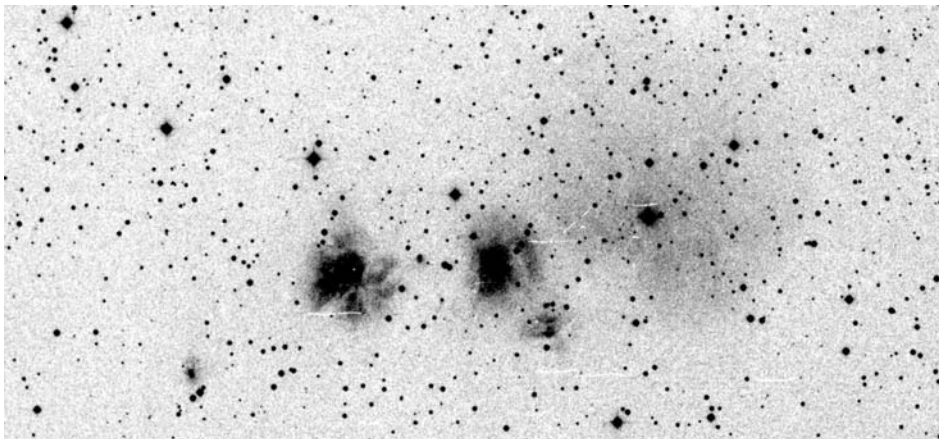


Sh 2 - 254-258 in Orion



60x60, red



POSS blue



narrow band Dean Salman

| | other name | RA | dec | dia. ' | F | S | B |
|----------|------------|------------|-----------|--------|---|---|---|
| Sh 2-254 | | 06 12 20.5 | +18 02 37 | 11 | 2 | 2 | 2 |
| Sh 2-255 | | 06 13 08.4 | +17 58 31 | 3 | 1 | 2 | 3 |
| Sh 2-256 | | 06 12 38.3 | +17 56 35 | 1 | 3 | 2 | 2 |
| Sh 2-257 | IC 2162 | 06 12 50.4 | +17 58 33 | 3 | 1 | 2 | 3 |
| Sh 2-258 | | 06 13 32.3 | +17 55 27 | 1 | 3 | 2 | 2 |

Distance: 2000 pc, Source: 1995ApJ...445..246C

A molecular cloud with 27 thousand solar masses surrounds the Sh 2-254 to Sh 2-258 HII and star formation region.

Observing notes:

