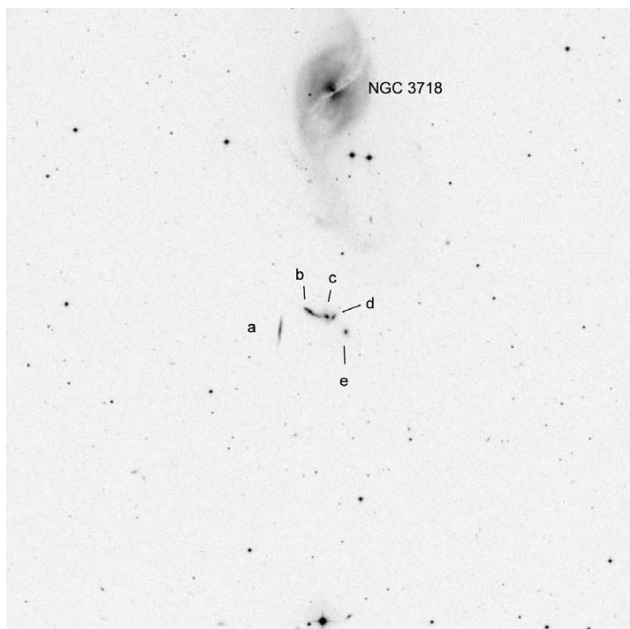


Hickson 56 in Ursa Major



HCG Const. coordinates (2000) bright. memb. mag
 56 UMa 11h 32m 32s +52° 57' 14.5

galaxy	ra (1950)	dec	a	b	type	T	B_I	C	D_B	R_I	C	D_R	B-R	B_T	R_TC	err	V_r	err	C	names
			"	"					"	"		"					km/s	km/s		
56a	11 30 01.85	+53 13 01.5	27.90	7.00	Sc	7	16.36	0	24.30	14.81	0	27.10	1.51	15.96	15.24	0.20	8245	35	0	Mk176
56b	11 29 55.61	+53 13 36.0	17.10	10.40	SBO	1	15.00	1	33.60	13.52	1	41.20	1.43	14.83	14.50	0.20	7919	38	0	U6257
56c	11 29 51.83	+53 13 25.4	18.40	14.00	SO	1	15.87	1	23.70	14.27	1	30.70	1.52	15.66	15.37	0.20	8110	28	0	U6257
56d	11 29 50.42	+53 13 24.2	12.50	7.90	SO	1	17.01	1	18.70	15.32	1	24.40	1.62	16.84	16.52	0.20	8346	56	0	U6257
56e	11 29 47.85	+53 12 55.3	12.50	9.50	SO	1	16.54	0	20.30	15.19	0	29.30	1.20	16.52	16.23	0.10	7924	63	0	

Notes:

22" f/4: This is one of the prototypical Hickson groups. Easy to find near NGC 3718, appears as weak string already with smaller telescopes. The string can be separated into three knots, b, c/d, and e (somewhat offset), sometimes (good conditions) c and d appear separate as well. a is the most difficult, appears as an elongated glow with indirect vision, no distinct bright nucleus and thus much weaker than expected from the POSS plate.

Earlier observations with my 14" revealed no complete resolution of the chain, though knots were sometimes visible. a was not seen with 14".

